

AGREEMENT OF SALE

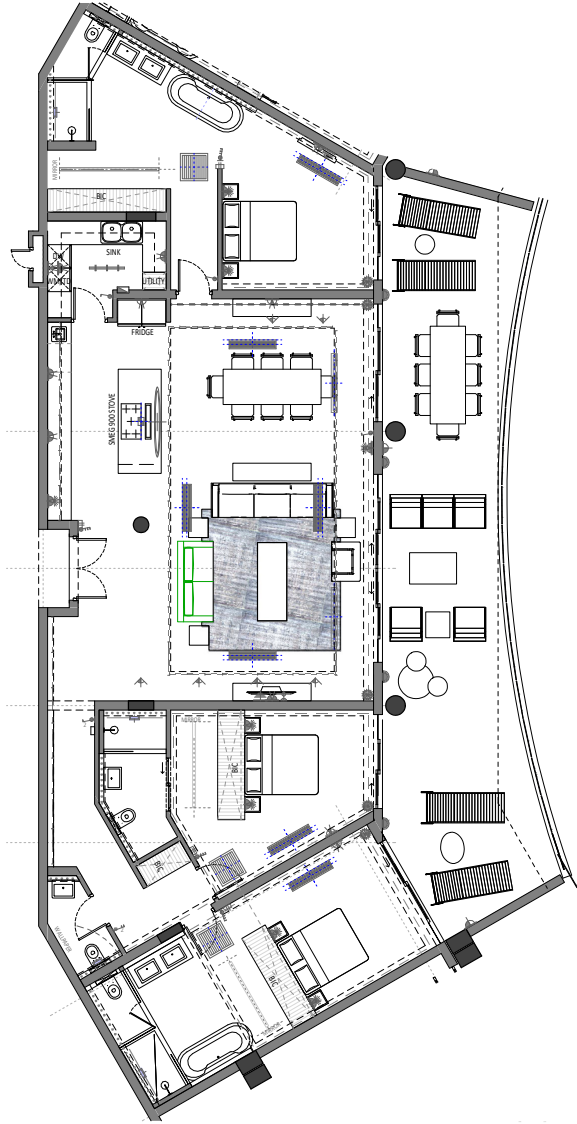
Signature
APARTMENTS



MUNYAKA™

WATERFALL | GAUTENG | SOUTH AFRICA

APARTMENT FLOOR PLAN



LIFESTYLE CENTRE - LAGOON FACING
DIAMOND PENTHOUSE

3 BEDROOM 3 BATHROOM
APARTMENT Q

APARTMENT NUMBERS:
5407 / 5409

Apartment Area	215.00m ²
Patio	65.00m ²
Total	280.00m²
Basement Storage	15.00m ²
Overall Total	295.00m²



AGREEMENT OF SALE

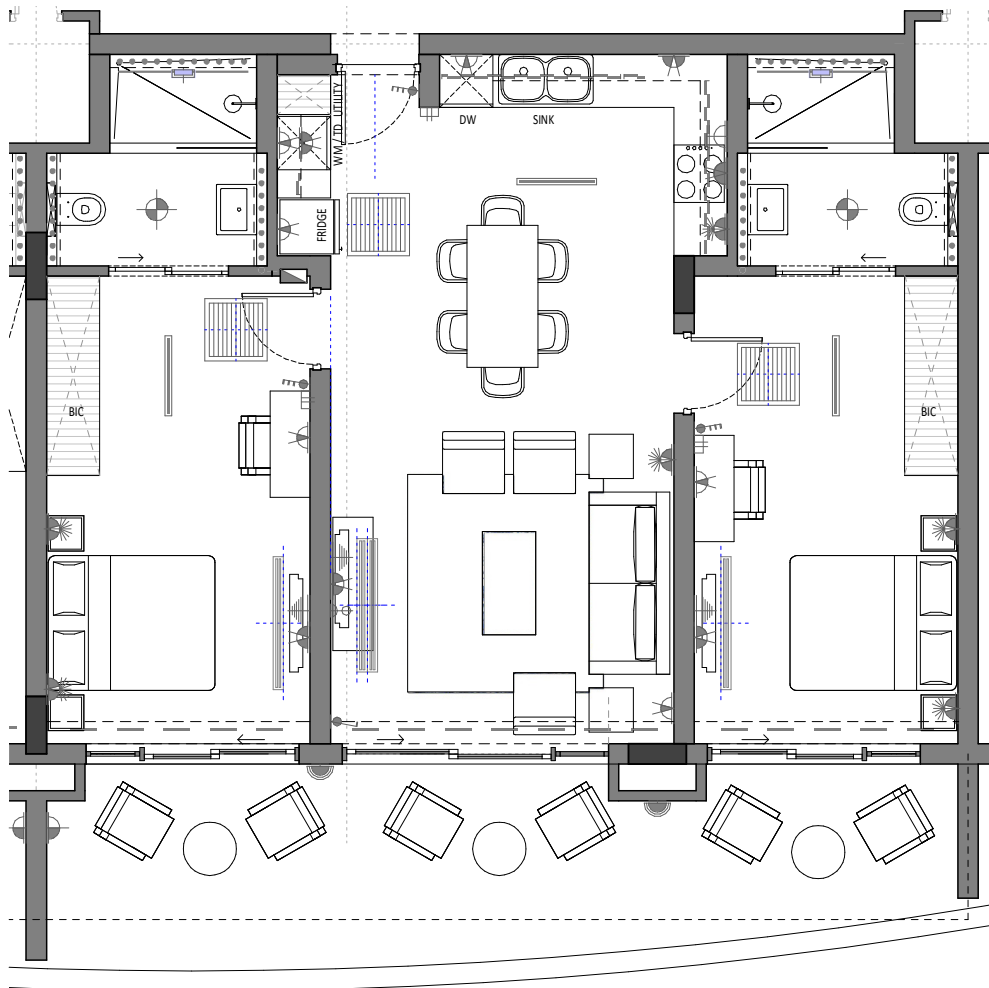
Lifestyle
APARTMENTS

WATERFALL
CITY

MUNYAKA™
WATERFALL, JOHANNESBURG, SOUTH AFRICA

WATERFALL | GAUTENG | SOUTH AFRICA

APARTMENT FLOOR PLAN



LIFESTYLE CENTRE APARTMENTS

Apartment Area	85.00m ²
Covered Balcony	25.00m ²
Total Area	110.00m²

2 BEDROOM 2 BATHROOM
APARTMENT M

Balwin
PROPERTIES

GREEN
BUILDING
COUNCIL
SOUTH AFRICA

Edge
Excellence in Design
For Greater Efficiencies

AGREEMENT OF SALE

Lifestyle
APARTMENTS

W
WATERFALL
CITY

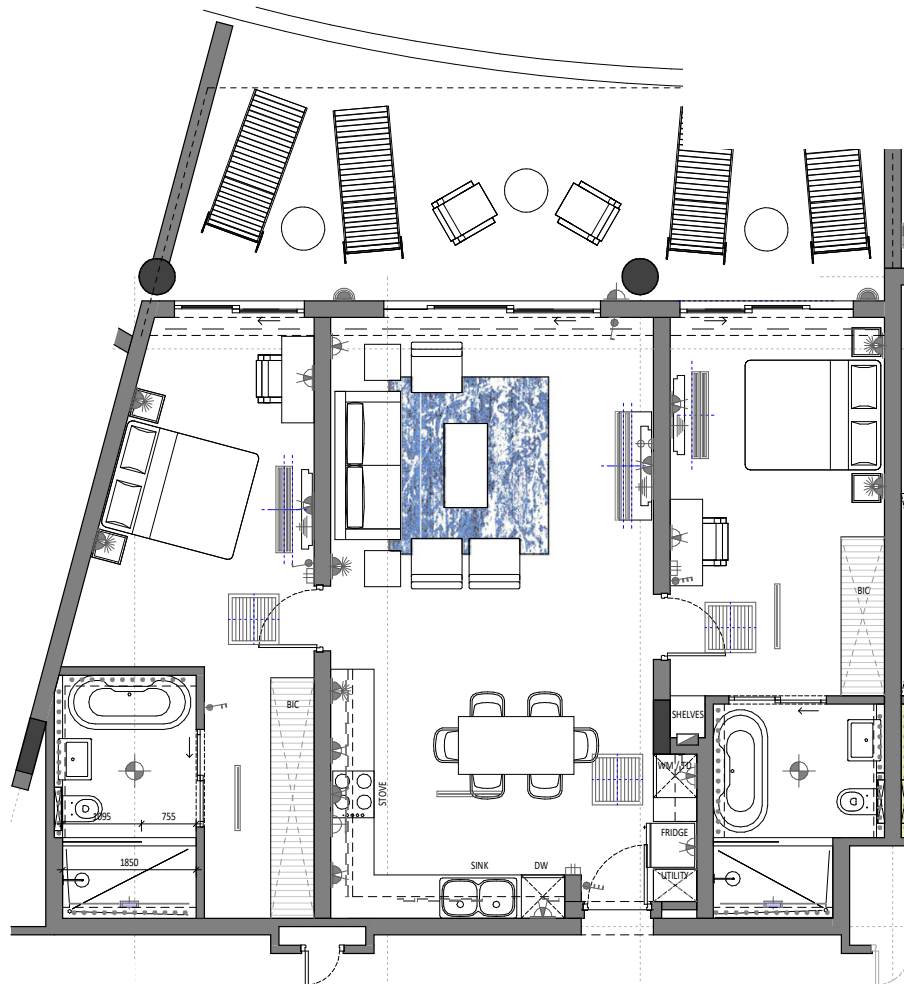
MUNYAKA™
WATERFALL, JOHANNESBURG, SOUTH AFRICA

WATERFALL | GAUTENG | SOUTH AFRICA

APARTMENT FLOOR PLAN

LIFESTYLE CENTRE - LAGOON FACING

TANZANITE



Apartment Area	100.00m ²
Covered Balcony	35.00m ²
Total Area	135.00m²

2 BEDROOM 2 BATHROOM

APARTMENT N

Balwin
PROPERTIES

GREEN
BUILDING
COUNCIL
SOUTH AFRICA

Edge
Excellence in Design
For Greater Efficiencies

AGREEMENT OF SALE

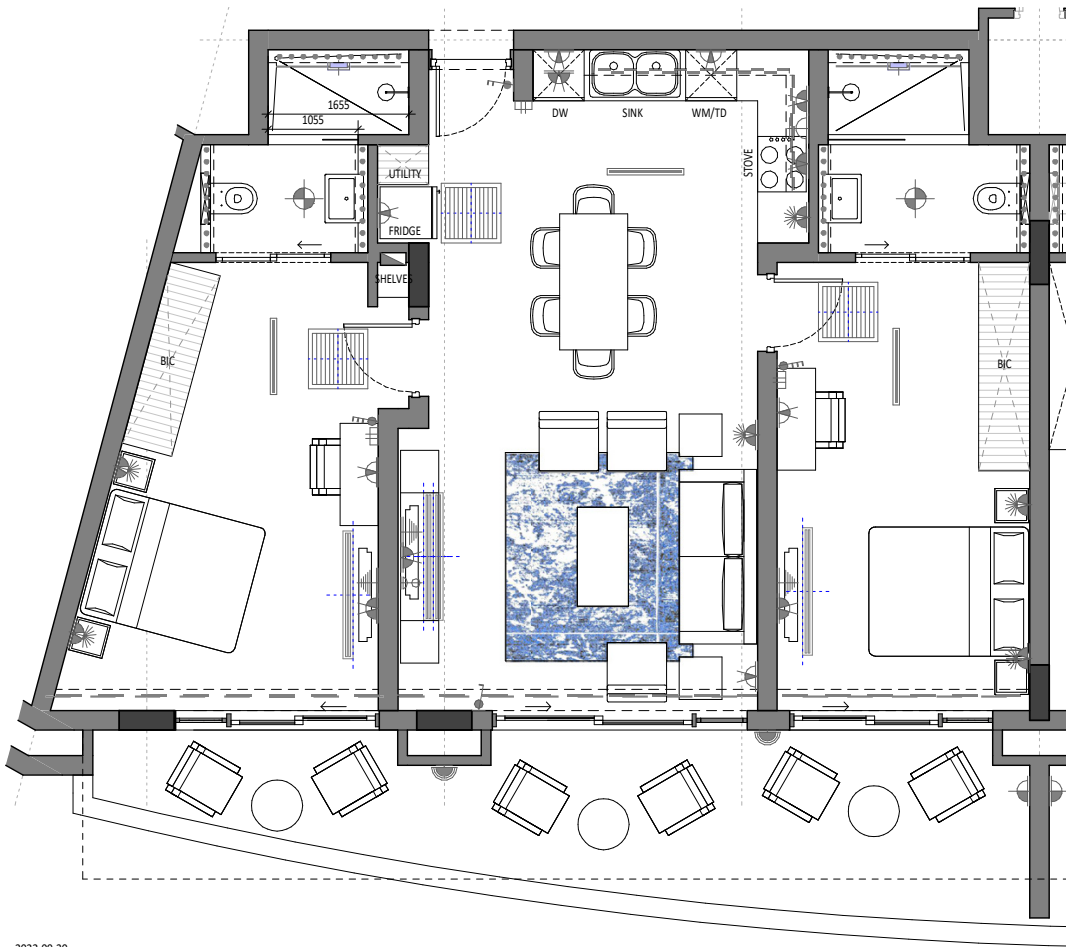
Lifestyle
APARTMENTS

WATERFALL
CITY

MUNYAKA™
WATERFALL, JOHANNESBURG, SOUTH AFRICA

WATERFALL | GAUTENG | SOUTH AFRICA

APARTMENT FLOOR PLAN



2022-09-30

LIFESTYLE CENTRE APARTMENTS

Apartment Area	85.00m ²
Covered Balcony	20.00m ²
Total Area	105.00m²

2 BEDROOM 2 BATHROOM
APARTMENT 0

Balwin
PROPERTIES

GREEN
BUILDING
COUNCIL
SOUTH AFRICA

Edge
Excellence in Design
For Greater Efficiencies

AGREEMENT OF SALE

Signature
APARTMENTS



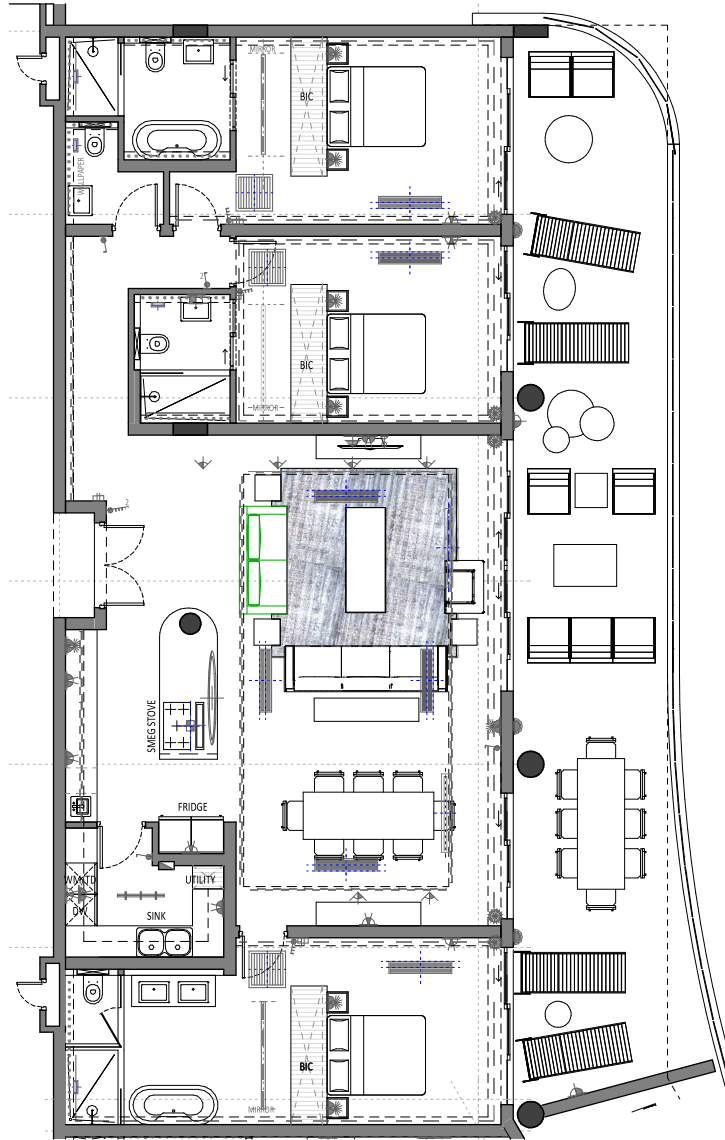
MUNYAKA™

WATERFALL | GAUTENG | SOUTH AFRICA

SIGNATURE CENTRE – LAGOON FACING

DIAMOND

PENTHOUSE



Apartment Area	180.00m ²
Patio	65.00m ²
Total	245.00m²
Basement Storage	15.00m ²
Overall Total	260.00m²

3 BEDROOM 3 BATHROOM APARTMENT R

Balwin
PROPERTIES



AGREEMENT OF SALE

Signature
APARTMENTS



MUNYAKA™

WATERFALL | GAUTENG | SOUTH AFRICA



SIGNATURE CENTRE – WEST WING

DIAMOND

PENTHOUSE

Apartment Area	695.00m ²
Covered Patio	85.00m ²
Uncovered Patio	405.00m ²
Butlers Suite	20.00m ²
Total	1 205.00m²
Basement Storage	25.00m ²
Overall Total	1 230.00m²

6 BEDROOM 6 BATHROOM APARTMENT S

Balwin
PROPERTIES



AGREEMENT OF SALE

Signature
APARTMENTS



MUNYAKA™

WATERFALL | GAUTENG | SOUTH AFRICA

SIGNATURE CENTRE APARTMENTS



Apartment Area	350.00m ²
Covered Patio (Ground)	100.00m ²
Uncovered Patio (Ground)	100.00m ²
Butlers Suite	30.00m ²
Apartment First Floor	155.00m ²
Covered Patio (First)	40.00m ²
Total	775.00m²
Pool & Decking	105.00m ²
Courtyard	15.00m ²
Covered Entrance	5.00m ²
Garages	100.00m ²
Storage	10.00m ²
Total	235.00m²
Overall Total	1010.00m²

6 BEDROOM 6 BATHROOM APARTMENT VILLA

