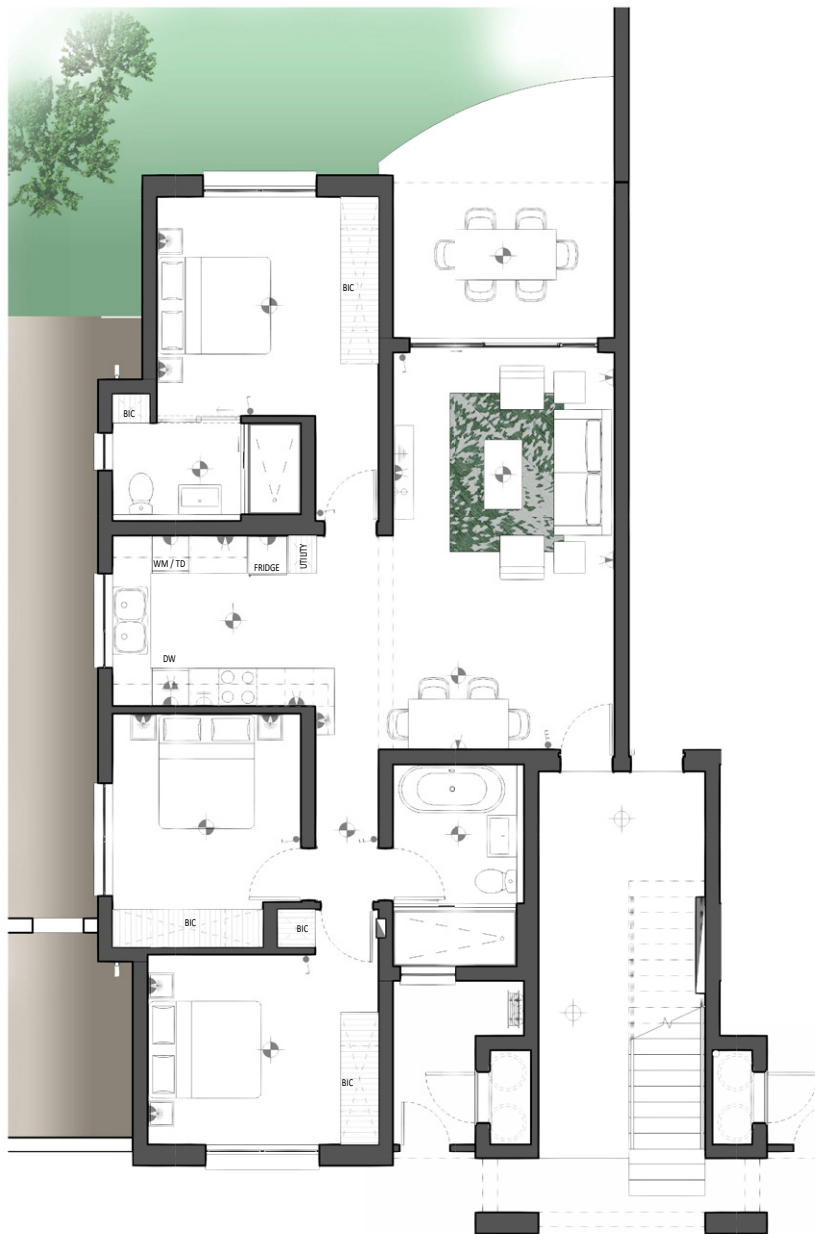


# APARTMENT FLOOR PLAN

GROUND FLOOR  
BLOCK A



|                   |                            |
|-------------------|----------------------------|
| Apartment Area    | 101.97m <sup>2</sup>       |
| Covered Patio     | 13.80m <sup>2</sup>        |
| <b>Total Area</b> | <b>115.77m<sup>2</sup></b> |

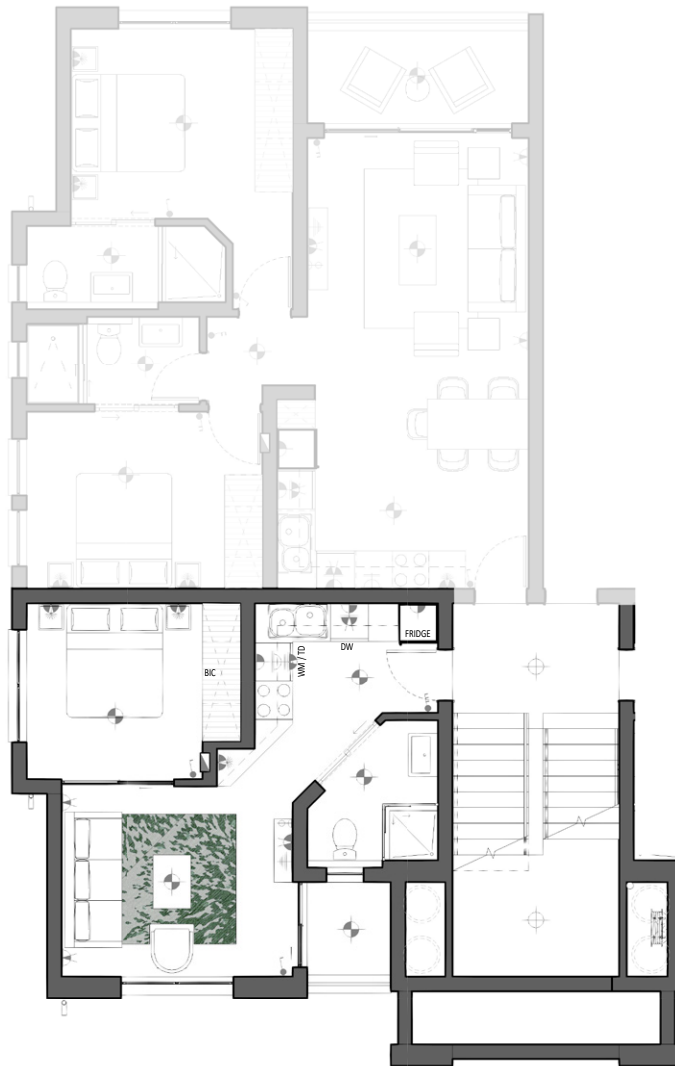
**3 BEDROOM 2 BATHROOM**  
**TYPE A**

REVISION G



# APARTMENT FLOOR PLAN

FIRST FLOOR  
BLOCK A



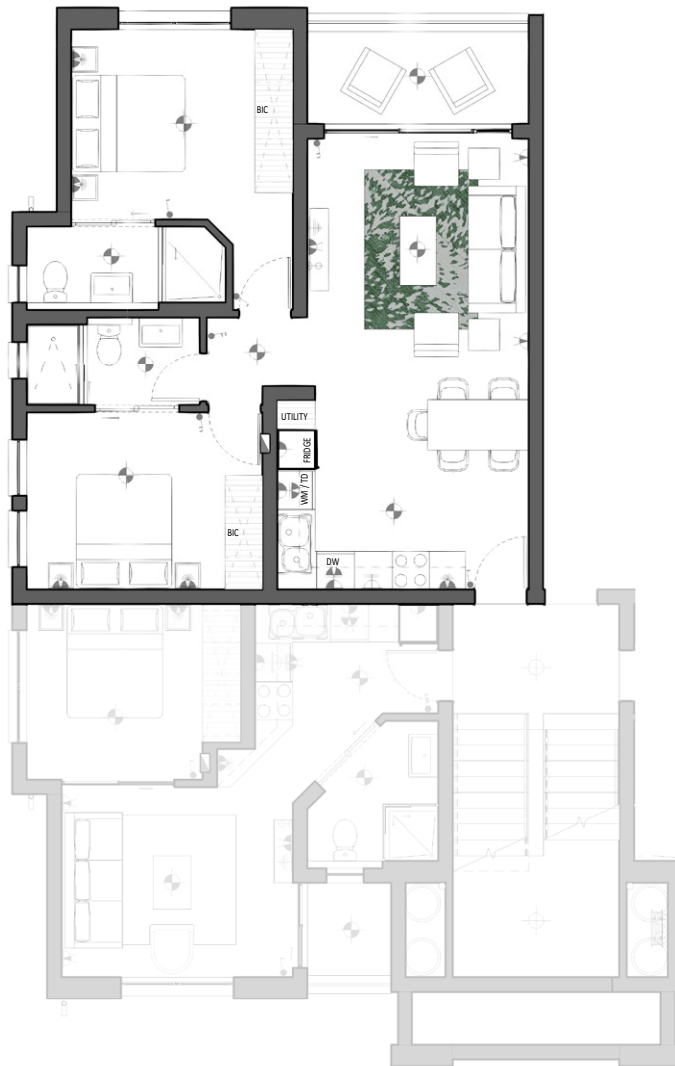
|                   |                           |
|-------------------|---------------------------|
| Apartment Area    | 38.51m <sup>2</sup>       |
| Covered Balcony   | 2.49m <sup>2</sup>        |
| <b>Total Area</b> | <b>41.00m<sup>2</sup></b> |

**1 BEDROOM 1 BATHROOM**  
**TYPE C**

REVISION G

# APARTMENT FLOOR PLAN

FIRST FLOOR  
BLOCK A



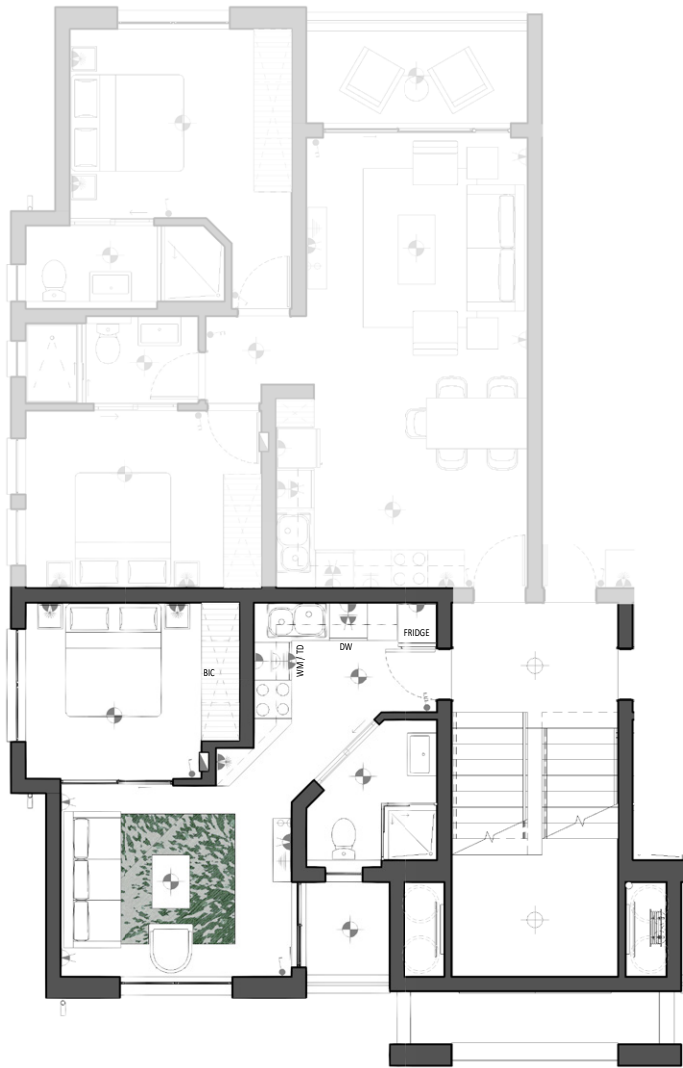
|                   |                           |
|-------------------|---------------------------|
| Apartment Area    | 68.69m <sup>2</sup>       |
| Covered Patio     | 6.33m <sup>2</sup>        |
| <b>Total Area</b> | <b>75.02m<sup>2</sup></b> |

**2 BEDROOM 2 BATHROOM**  
**TYPE B**

REVISION G

# APARTMENT FLOOR PLAN

SECOND FLOOR  
BLOCK A



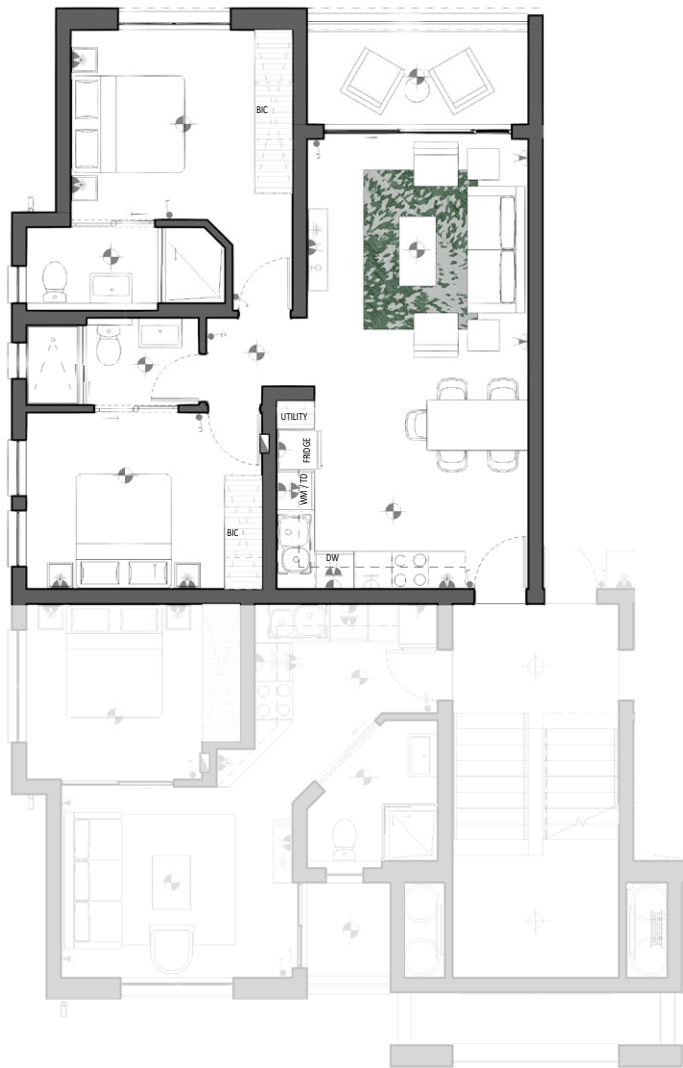
|                   |                           |
|-------------------|---------------------------|
| Apartment Area    | 38.51m <sup>2</sup>       |
| Covered Balcony   | 2.49m <sup>2</sup>        |
| <b>Total Area</b> | <b>41.00m<sup>2</sup></b> |

**1 BEDROOM 1 BATHROOM**  
**TYPE C**

REVISION G

# APARTMENT FLOOR PLAN

SECOND FLOOR  
BLOCK A



|                   |                           |
|-------------------|---------------------------|
| Apartment Area    | 68.69m <sup>2</sup>       |
| Covered Balcony   | 6.33m <sup>2</sup>        |
| <b>Total Area</b> | <b>75.02m<sup>2</sup></b> |

**2 BEDROOM 2 BATHROOM**  
**TYPE B**

REVISION G

# APARTMENT FLOOR PLAN

THIRD FLOOR  
BLOCK A



|                   |                            |
|-------------------|----------------------------|
| Apartment Area    | 98.20m <sup>2</sup>        |
| Covered Balcony   | 19.30m <sup>2</sup>        |
| <b>Total Area</b> | <b>117.50m<sup>2</sup></b> |

**3 BEDROOM 2 BATHROOM**  
**TYPE D PENTHOUSE**

REVISION G